



Consortium for Advanced Research Training in Africa

July - December 2022 | Vol 17 | Issue 15

CARTA News

The Newsletter of the Consortium for Advanced Research Training in Africa

A SPOTLIGHT ON THE CARTA | PG 4
PARTNERS

PG 6 | FORUM DEEPENS THE CARTA-
UNIVERSITY OF RWANDA PARTNERSHIP

THE 14TH PARTNERS ANNUAL FORUM | PG 8

PG 9 | CARTA EVIDENCE WEBSITE



PARTNERSHIPS: KEYSTONE OF CARTA'S SUCCESS



Cover Photo: © CARTA, 2022

Welcome Note

By Dr. Florah Karimi, CARTA Program Manager



CARTA was established as a South-South partnership of African universities and research institutions, with a South-North collaboration of non-African universities and research institutions. Central to its Theory of Change (ToC) is a critical mass of well-trained and motivated researchers supported by a conducive environment, and institutional change agents who will train the next generation of African research leaders. This will engineer a shift towards research-supportive academic environments and ultimately contribute to the Research and Development (R&D) ecosystem in Africa.

Over the past twelve years, CARTA has harnessed the power of partnerships, which has been beneficial to all its partners. It has embraced a participatory style of leadership that is open, transparent, and equitable, and has prioritized the sharing of resources and expertise, knowledge and skills exchange, and mutual respect for each partner – all of which have contributed to the program’s success. Consequently, we have witnessed great ownership, commitment, and accountability from the various partner institutions.

CARTA regularly communicates with its partners, who collectively make decisions and take actions in favor of the program. CARTA

Central to CARTA’s Theory of Change is a critical mass of well-trained and motivated researchers supported by a conducive environment, and institutional change agents who will train the next generation of African research leaders.

policies and guidelines are developed in a consultative and transparent manner, underpinned by equity considerations to ensure that all partners benefit from the program, without compromising on excellence. The partner institutions host, coordinate and facilitate CARTA events, as well as promote and ensure the visibility of the program within their institutions and beyond. They coordinate institutional-based CARTA activities and actively engage in projects that are geared towards the sustainability of the program gains beyond its lifespan and reach. The partners also provide opportunities for doctoral training, post-doctoral support, and senior faculty exchange, in addition to the provision of expertise, supervision, mentorship, and advisory support. All this has led to great networking and collaborations on research and research capacity strengthening initiatives, strengthened research capacity, and increased research productivity at individual, institutional, programmatic and regional levels in Africa.

In our current strategic direction (2021-2025), we will continue to strengthen our partnerships and build on our existing gains to equip the partner institutions to mainstream various interventions, for greater sustainability and wider impact of the program beyond its lifespan. In this respect, we have, over the past two years, been deliberate on a mainstreaming process that entails the preparation of digital content and resources that will be accessible to the partner institutions through the CARTA website; revamping of the CARTA interventions’ materials and modules; development and carrying out of related Training of Trainer (ToT) workshops for institutional-based facilitators; and providing initial technical and financial support for the mainstreaming of identified CARTA interventions. We believe that through this process, the partner institutions will be able to effectively leverage the gains of the program to strengthen postgraduate training, research, and related support, beyond the life and reach of the program.

I welcome you all to read about our recent achievements and activities for the second half of 2022. Many thanks to our Board, Partners, Secretariat, Fellows, and the entire CARTA community for your continued support and contributions to the program.

A Spotlight on the CARTA Partners

By CARTA Secretariat

Since the establishment of CARTA in 2008, the program has forged partnerships and collaborations within and beyond the African continent with institutions that contribute tremendously to the realization of its objectives. The Consortium comprises eight African partner universities, four African research institutions, and eight non-African partner (NAP) institutions, jointly led by the African Population and Health Research Center (APHRC), Kenya, and the University of the Witwatersrand (Wits), South Africa.

African partner universities

They are well-established public institutions of learning with a track record of scholarly excellence. They are research-intensive and have a strong and vibrant research culture. They contribute to the program by:

- ◆ Promoting and ensuring visibility of the CARTA Program;
- ◆ Providing doctoral training and research capacity-building opportunities to CARTA fellows;
- ◆ Identifying and facilitating CARTA fellows' academic and research excellence and career development;
- ◆ Providing:
 - Advisors and mentors for the fellows' internships, teacher replacement and post-doctoral placement opportunities to fellows;
 - Senior faculty exchange opportunities to staff members employed in African partner institutions; and
 - Expertise to support CARTA research capacity strengthening activities, including facilitation of sessions, curriculum/module development, grant proposal development, and participation in CARTA ad hoc scientific advisory groups.
- ◆ Mainstreaming CARTA interventions in the institutions; and
- ◆ Granting tuition waivers to staff members enrolled for doctoral degree programs in the respective institutions.

African research institutions

They are productive research-active centers, with multidisciplinary research teams operating within strong research environments. Their role in the program includes:

- ◆ Offering specialized training in areas of expertise;
- ◆ Being role models for research leadership;
- ◆ Hosting post-doctoral fellows and faculty visits;
- ◆ Providing access to their own and their inter-linked networks;
- ◆ Mentoring the CARTA Early Career Researchers (ECRs); and
- ◆ Offering supervisors for PhD fellows through joint appointments at CARTA universities.

Non-African partner institutions

They are committed to capacity development and research strengthening within African institutions and offer tremendous support to CARTA fellows during the course of their PhD programs. They participate in the program by:

- ◆ Developing, reviewing, and facilitating CARTA's research capacity-strengthening interventions;
- ◆ Mentoring graduates, supervisors, and faculty;
- ◆ Facilitating fellows' access to specialized training and international opportunities;
- ◆ Offering complementary and comparative experiences on determinants of health; and
- ◆ Participating in reviewing exercises linked to CARTA training or selection of postdoctoral awards.

Central to the collaboration and relationship is a robust governance structure that is supported by a strong Executive Directorate, Secretariat, focal persons, and a NAP coordinator drawn from the CARTA partner institutions - as illustrated in figure 1.

The focal persons play a pivotal role in the implementation of CARTA’s strategies at its partner institutions and work closely with the Secretariat to coordinate the program’s activities in their respective institutions. The NAP coordinator is primarily responsible for attuning CARTA and its activities in NAP institutions and harmonizing the roles of focal persons who support CARTA activities in those institutions. Their role also includes organizing the Graduate Grant Writing Workshop (GGWW) and the external review of the CARTA postdoctoral award applications.

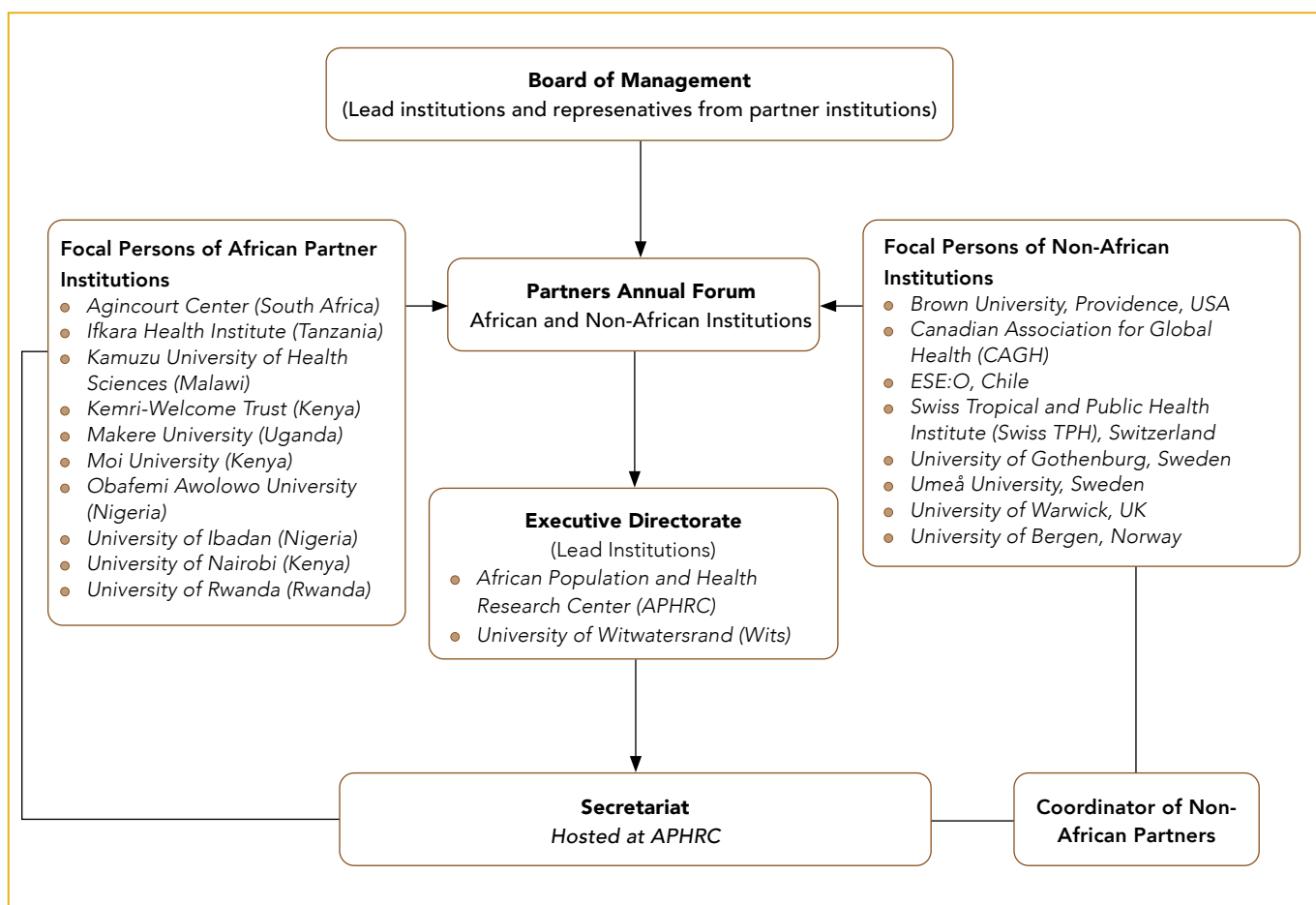


Figure 1: CARTA Governance Structure

As CARTA actualizes its current strategic phase - CARTA2025 - , its partners’ distinct and varied roles have been instrumental in achieving the phase’s objectives of maintaining a pipeline of high-quality ECRs; the creation of research hubs in partner institutions; the mainstreaming of CARTA interventions at partner institutions; and facilitating the engagement of the CARTA community with society.

Forum Deepens the CARTA-University of Rwanda Partnership

By Ann Waithaka, CARTA Communications Officer



Representatives from the University of Rwanda management, focal persons from CARTA partner institutions; CARTA secretariat and fellows during the CARTA-University of Rwanda Partnership Forum held on September 26, 2022 in Rwanda

The University of Rwanda (UR) is one of CARTA's long-standing eight African partner universities. On September 26, 2022, CARTA together with UR held a partnership forum that sought to marshal support for increased visibility, understanding, and engagement of the program at UR. The forum was held at the Kigali Convention and Exhibition Village in Rwanda.

In attendance were representatives from UR management: Prof Nosa O. Egiebor (Deputy Vice-Chancellor for Academic Affairs and Research), Dr. Raymond Ndikumana (Deputy Vice-Chancellor for Strategic Planning), and Prof Jeanne Kagwiza (Principal of the College of Medicine and Health Sciences); CARTA secretariat, focal persons from partner institutions; and CARTA fellows and graduates based at UR. The UR CARTA focal persons - Pierre Claver Rutayisire (Acting Principal of the College of Business and Economics and Senior Lecturer) and Moussa Hakizimana (Senior Lecturer) moderated the proceedings of the day that had a range of informative and interactive sessions.

CARTA-UR partnership

To date, there are 24 CARTA fellows (8 graduates, 16 in progress) who are faculty members of UR. CARTA has

trained 10 postgraduate supervisors based at UR through the Supervisors Workshop (SW) and 53 faculty and staff members through the Academic, Professional, and Administrative Staff Seminar (APAS, formerly known as FAS).

Between August 2021 and December 2022, 10 UR staff were involved as participants in the first round of CARTA's ToT initiative for the various CARTA interventions (SW, APAS, GGWW, and the Joint Advanced Seminars –JASes). Two more staff were facilitators in the JASes ToT that was jointly hosted with UR in August 2022, a role the university will also play in subsequent years. Moreover, UR hosted the vice-chancellors meeting in April 2019, and in September 2022 hosted both the 14th Partners Annual Forum and the Board of Management meeting.

Success stories

During the partnership forum, some of the fellows and other beneficiaries had an opportunity to demonstrate the impact of the program with realized successes that they attribute to CARTA. This is in various aspects that include scientific publishing, teaching, quality of research, and attraction of grants. Some of the success stories are highlighted below.



Celestin Banamawa

Cohort 7 fellow registered at the Makerere University, Lecturer at UR

"As a lecturer, I learned much from CARTA facilitators about teaching methodologies, particularly sandwich methods during class interaction. I have since been applying the same methodology during my class sessions and students are more attentive and satisfied with the delivery of sessions."



Aurore Nishimwe

Cohort 7 graduate, Lecturer at UR

“The CARTA program has made my doctoral study a lot easier, more competitive, and scholarly. I have authored and co-authored 10 journal articles; five of which are out of my PhD work.”

Celestin Ndikumana

Cohort 5 graduate, Lecturer at UR

“I am one of the three CARTA graduates who started the institutionalization of CARTA activities at the University of Rwanda through an educational project grant which culminated in the development and approval of an inter-disciplinary research methodology module. The module is currently being delivered across all PhD programs at UR.”



Noel Korukire,

Cohort 9 fellow, Lecturer at UR

“With the encouragement of CARTA, I managed to win a fellowship on research administration and management. With this fellowship, I spent six weeks at Georgia State University, USA and learned so much. I now use the acquired knowledge to support students and colleagues in research management and administration.”

Julienne Murererehe

Cohort 8 fellow registered at the University of the Witwatersrand, Lecturer at UR

“I was promoted to a Lecturer from an Assistant Lecturer position, and this promotion was supported by my achievement of having won a CARTA fellowship at the time. Moreover, I won several travel grants including a one-month stay at Harvard University to learn about ethical issues in global health research and a one-week workshop organized by the Kenya Biology of Parasitism (KENBOP).”



Berthilde Uwamwezi

Academic and Digital Library Services Specialist/Faculty Member at UR

“I gained a lot from the CARTA APAS training [held in June 2022 at Makerere University] and I am very happy that the methodology I learned is working. I am applying it in the training I do with librarians at the graduate and postgraduate levels. Participants are engaged and appreciative of the training approach.”

Institutionalization of CARTA interventions at UR

In June 2017, CARTA awarded UR a seed grant to institutionalize aspects of its interventions and innovations through a project, dubbed ‘*the Intra-university Collaboration for Advanced Research Training at UR (ICARU)*’. The project sought to develop, avail, and offer a multidisciplinary doctoral research methodology module at UR, adapted from the CARTA JASes intervention. By the end of the project in 2019, the main goal had been fully realized. The research methodology module is now embedded in UR’s doctoral training and compulsory for all

PhD students. According to the UR team, institutionalizing the CARTA JASes in doctoral research training has greatly enhanced the quality of PhDs at the university and ECR outputs.

The 2022 CARTA-UR partnership forum was concluded with promising commitments from representatives of UR’s management - Prof. Egiebor, Dr. Ndikumana, and Prof. Jeanne Kagwiza, who pledged to not only continue to support the CARTA-UR partnership but also increase the number of UR-based participants in CARTA interventions. In this regard, Dr. Ndikumana committed to explore possible sources of funds that can finance the participants and beyond that, support CARTA-like activities at the university.

The 14th Partners Annual Forum

By Ann Waithaka, CARTA Communications Officer



Focal persons/partner representatives during the 14th Partners Annual Forum held in Kigali, Rwanda on September 27 and 28, 2022

Annually, CARTA brings together all its partners, represented by focal persons, to review and discuss the program's progress and activities. In 2022, CARTA convened the 14th Partners Annual Forum (PAF) in Kigali, Rwanda on September 27 and 28. The overall objectives of the forum were to determine the structure and strategies that should be employed in the creation of research hubs; and deliberate on how to leverage the 2023 CARTA conference to strengthen the program. These are two of the four interlinked strategic objectives of CARTA's strategic phase, CARTA2025, that builds on the successes of two previous phases.

The CARTA research hubs aim to provide research knowledge, training, and expertise in specific thematic areas. The research hubs will build on and consolidate the research expertise existing in the CARTA network and will bring in new collaborators as needed to strengthen the hub. They will be led by CARTA African partner universities and will be a network of partners, mostly within CARTA but also beyond, who work together in the chosen research area.

On the other hand, the 2023 CARTA conference is a strategic activity to enhance the engagement of the CARTA community with society. The conference will contribute to this by providing a space where CARTA ECRs can disseminate their work, exchange knowledge and experiences, and network. It will also be a forum for the CARTA family to engage other stakeholders of the research capacity strengthening sphere.

During the PAF, the partners brought on board insightful ideas to actualize both initiatives in 2023. While the conference is planned for September 2023, the call for expressions of interest for the research hub was shared out before the end of 2022. The selection and award process is intended to be finalized within 2023.

Other issues the partners deliberated on were the performance of the program, mainstreaming initiative of CARTA interventions at partner institutions, and the 2022 financial report and projections for 2023.

The partners also participated in the selection of the Board of Management for the 2023-2025 period. The CARTA Board comprises seven voting members, notably, three members from African partner universities; one member from the African research institutes; one non-African partner; and the two co-Directors of

CARTA, who also serve as the representatives from APHRC and Wits. Selected partners serve on the Board for a two-year term, on a rotational basis. At the expiry of the first two-year term on the Board, institutions are eligible for re-appointment, for a second two-year term but cannot serve for more than four consecutive years.

For the period 2021 - 2023, the program has been diligently served by:

Funke Fayehun	University of Ibadan	BoM Chairperson
Sharon Fonn	University of Witwatersrand	CARTA Co-Director BoM Member
Catherine Kyobutungi	APHRC	CARTA Co-Director BoM Member
Jill Allison	Canadian Association for Global Health	Board Member
Anne Khasakhala	University of Nairobi	Board Member
Adamson Muula	University of Malawi	Board Member
Fredros Okumu	Ifakara Health Institute	Board Member

During the selection, the University of Ibadan, University of Nairobi, and Ifakara Health Institute rotated out of the Board while Kamuzu University of Health Sciences (KUHeS) and the Canadian Association for Global Health (CAGH) were re-elected for a second two-year term. Jill Allison, the non-African partners representative, stepped down and she was replaced by Susan Elliott, the Chair of CAGH.

CARTA wishes to thank the members of the previous Board for their dedication, commitment, and outstanding service in steering the program strategically. The program also welcomes incoming members: Xavier Gomez-Olivet (Agincourt), John Bosco Isunju (Makerere University), and Christopher Odhiambo (Moi University).

CARTA Evidence: A Collaborative Platform to Increase Visibility of African Research and Researchers

By Ann Waithaka, CARTA Communications Officer with contributions from Prof. Jude Igumbor, CARTA Evidence Project lead, and Dr. Marta Vicente-Crespo, CARTA Program Manager

Driven by CARTA ECRs producing research findings and the need to make the findings available and accessible to various audiences so it could have impact, CARTA led by Jude Igumbor, the co-focal person at the University of the Witwatersrand, embarked on the development of the CARTA Evidence website in 2021. After months of rigorous and critical work, the website was finally launched in a webinar that took place on December 2, 2022.

The **CARTA Evidence website** is an interactive platform that aims to demonstrate the impact of the CARTA network by timeously tracking, collating, analyzing, displaying, and enabling the uptake of empirical and theoretical evidence produced. CARTA Evidence seeks to identify and showcase human capacity and synergies within and outside the network to drive opportunities and research operational efficiencies

Building on available information technology, the end goal is increased access to data and speed of discovery and scientific advancement. It offers a comprehensive list of research evidence and publicly funded published data to promote accurate monitoring of population health and inform the precision of healthcare policy, innovations, and the betterment of population health.

The mission and vision of CARTA Evidence will be achieved by fostering human capital development, visibility of evidence, knowledge translation, open science, responsive policies, knowledge management and impact optimization,

tracking and curating the structure of evidence, and cross-border and cross-disciplinary collaboration. The website is envisioned to:

- Enable data findability and possible analysis
- Enable human capital development
- Contribute to policy and planning
- Evidence management

The platform facilitates a quick review of the evidence produced by the CARTA fellows, allowing easy synthesis of the available evidence around specific topics. For instance, through the bibliometric dashboard, users can access an overview of the research productivity of the CARTA fellows, which can be quickly filtered by institution, gender, and cohort. Further down, filtering by research area, the word cloud will provide the user easy access to the most active fellows in the area, and with the click of a button lead them to their full profiles on the CARTA website where more details can be found on their work and links to ORCID research profiles.

CARTA Evidence is a collaborative effort between the University of the Witwatersrand and the African Population and Health Research Center. CARTA has funded the innovative platform thanks to the generosity and flexibility of funding that the Carnegie Corporation of New York and the Swedish International Cooperation Agency (Sida) provide to the program.



Consortium for Advanced Research Training in Africa

CARTA Fellows Partner to Improve Knowledge on Sexual and Reproductive Health and Rights in Rwanda

By CARTA Fellows - Alice Muhayimana, JC Allen Ingabire, Aline Uwase, and Emmanuel Nzabonimana



Alice
Muhayimana



Emmanuel
Nzabonimana



Aline
Uwase



JC Allen
Ingabire

Evidence from developed and developing countries shows that university students have insufficient knowledge of Sexual and Reproductive Health and Rights (SRHR). In Rwanda, no single study has been published on SRHR knowledge among university students. For a period of one year, four CARTA fellows together with three University of Rwanda (UR) faculty members will collaborate to improve SRHR knowledge among students at UR through a Mass Open Online Course (MOOC).

The project is being rolled out in three phases:

- ◆ **The first phase** involves assessing the level of SRHR knowledge among the students using mixed methods.
- ◆ **Phase two** will see the development and design of SRHR content based on the findings of the knowledge assessment.
- ◆ **The last phase** is implementation and evaluation where the developed SRHR course will be uploaded on the UR Moodle platform.

The project involves 441 registered/active students from the entire UR, which comprises six independent, self-governing colleges. The students will participate in the assessment and then attend the module through a required 6-week self-directed learning period. This will be followed by an online post-test survey using a similar questionnaire as in the pre-test to evaluate change in students' knowledge.

The project has identified five SRHR knowledge focus areas namely comprehensive sexual education, modern family planning, safe abortion/treatment of unsafe abortion, prevention and treatment of HIV, sexually transmitted infections, and prevention of gender-based violence.

The MOOC will allow UR students with or without a health sciences background to access adequate SRHR information free of charge anytime they wish and wherever they are. The course will be simple, interactive, and comprehensive. The developed MOOC will be hosted and remain on the UR Moodle platform which all UR students have access hence ensuring sustainability of the initiative. By providing and improving SRHR knowledge, issues related to lack of SRHR information like unwanted teenage pregnancies, which are increasing in Rwanda will be ameliorated. So far, the team has collected and analyzed data for the first phase.

The project team comprises CARTA cohort 10 fellows- Alice Muhayimana (principal investigator), JC Allen Ingabire, Aline Uwase, Emmanuel Nzabonimana; and staff from the e-learning Department of the University of Rwanda - Ntalindwa Theoneste, Dr. Niringiyumukiza Jean Damascene, and Dr. Nduwingoma Mathias. The project, funded by the Center for International Reproductive Health Training (CIRHT) - University of Michigan commenced on May 2022 and will come to an end in November 2023.



Fellows Say

Cohort 9 fellows share reflections and experiences of CARTA's PhD training - the Joint Advanced Seminars (JASes) - after attending the last seminar, JAS4. The CARTA JASes are designed to enhance the skills and knowledge of CARTA fellows, to guide and propel them through the research process and provide a foundation for building networks of researchers, peers, and mentors.



Nanfizat Abiket Alamukii
University of Ibadan

My experience with CARTA has been wonderful, challenging and incredible. My study was impacted by the JASes, which also gave me new insight into my proposal, data collection plan, analysis, and writing. **Every PhD student should have access to the CARTA program.**



Ernest Moya
University of Malawi

The CARTA training **helped me to have a clear research problem even before I registered as a PhD student.** Through the ESE:O assignments, I gained knowledge and skills that led me to publish a systematic review and meta-analysis and to this end, I have not asked a statistician to analyse data for my PhD work.

Priscille Musabirema
University of Rwanda

The **CARTA package** has offered varied knowledge and skills that have **made me an independent researcher, educator, policy influencer and research leader.**



Olujide Arije
Obafemi Awolowo University

For those doing PhD programs that do not have structured coursework, the CARTA JASes fill in the gap. From sessions to conceptualize research topics to writing classes, research methodology classes, and data analysis training, through to results presentation, and preparation to engage policymakers. **The four JASes are the full package.**



Evelyne Kantarama
University of Rwanda

With CARTA, I have acquired an advanced level of thinking, speaking, expressing, working, and interacting **with different individuals from different cultures and disciplines.**



Margaret Abimbola
University of Ibadan

CARTA has made my PhD journey seamless **otherwise I would not have ventured down the path of a PhD.** Being a CARTA fellow is actually beyond the PhD pursuit and it has assisted and propelled me to be a well-grounded and well-rounded academician.



Omolayo Oluwatope
University of Ibadan

One of the most valuable things **CARTA** has done for me is **put me on the path to research excellence and to a successful research career by providing me with top-notch PhD training.**



Kirsty Van Stormbroek
University of the Witwatersrand

CARTA has broadened my world. It has given me the privilege of interacting with colleagues from a number of other African countries. CARTA's financial support has been incredibly helpful - removed 'financial worries' from the PhD journey.



Charles Ssemugabo
Makerere University

The CARTA program has smoothed my PhD journey through the 4 JASes that are tailored to the training needs of the fellows at every stage. **The deliverables required to attend each JAS have been a strong motivation.**



Appointments



Frederick Oporia (cohort 10 fellow, Makerere University) was appointed to head the Trauma, Injuries, and Disability (TRIAD) Unit of the university. This is the only unit in Uganda that does research on injuries. He was also selected to join the World Health Organization Technical Advisory Group to write the first-ever status report on drowning prevention.



Yolanda Malele-Kolisa (cohort 5 graduate, University of the Witwatersrand) was appointed to head the Department of Community Dentistry in the School of Oral Health Sciences. Prior to the appointment, Yolanda was serving as the Head of the Clinical Unit within the Department.



Funmilola Oyinlola (cohort 7 fellow, Obafemi Awolowo University) was appointed to be a member of the University Research Seminar and Workshop Committee at her university. The committee aims to assure the quality of research and research training by developing, monitoring, and reviewing academic policies and their effectiveness in the university. The committee was officially inaugurated by Prof Adebayo Simeon Banire, Vice-Chancellor at Obafemi on September 27, 2022.



Mpho Molete (cohort 6 graduate, University of the Witwatersrand) was appointed an Adjunct Fellow at the Australian Centre for Integration of Oral Health, Western Sydney University. The appointment involves research collaboration and mentorship that is focusing on the integration of non-oral health workers in oral health programs and models of care using implementation science approaches.



Kudus Adebayo (cohort 6 graduate, University of Ibadan) was appointed to the Editorial Board of the African Humanities Programme (AHP) Book Series. His scope of responsibilities includes contributing to the development of guidelines on the editorial direction of the AH series; providing thoughtfully written assessments of manuscripts submitted to Editorial Board members for consideration; providing names and contact details of potential peer reviewers and manuscript mentors; and acting as a resource person at meetings and workshops organized to further the objectives of AHP.



Sara Nieuwoudt (cohort 4 graduate, University of the Witwatersrand) was appointed an Academic Editor for PLOS ONE. She looks forward to the support of the CARTA community as expert reviewers for the manuscripts that she is assigned. Sara was also made a Scientific co-Chair for the inaugural African Social Marketing Association Conference, which will be held at the University of Witwatersrand in April 2023. Abstract submissions for the conference are open to anyone involved in social and behavioral change (SBC) or social marketing research.



Promotions

Christine Mbindyo

(cohort 8 graduate, University of Nairobi) was promoted to a Lecturer position in the Department of Veterinary Pathology, Microbiology, and Parasitology, Faculty of Veterinary Medicine.



Olusola Olawoye

(cohort 7 graduate, University of Ibadan) was promoted to the rank of Reader, from Senior Lecturer in the Department of Ophthalmology, College of Medicine.



Omotade Ijarotimi

(cohort 10 fellow, Obafemi Awolowo University) was promoted to Associate Professor of Obstetrics and Gynaecology, Faculty of Clinical Sciences.



Boladale Mapayi

(cohort four graduate, Obafemi Awolowo University) was promoted to the grade of Professor at the Obafemi Awolowo University, Ile Ife (OAU), effective December 21, 2022. She becomes the first female Professor of Psychiatry at the University. In August, she was also appointed the Head of the Mental Health Department.



Olufunmilola Ogun

(cohort 7 graduate, University of Ibadan) was promoted to the rank of Reader, from Senior Lecturer in the Department of Ophthalmology, College of Medicine.



Mohamed Kassim

(cohort 4 graduate, University of Dar es Salaam) was promoted to Senior Lecturer in the Department of Information Studies.



Graduations and Completions

Between July and December 2022, eight fellows completed their PhD programs bringing the total number of CARTA graduates/PhD completions to **142**.



- Dieter Hartmann**
 PhD in Engineering
 University of the Witwatersrand
 Cohort 4



- Skye Adams**
 PhD in Speech - Lang
 Pathology
 University of the Witwatersrand
 Cohort 9



- Aurore Nishimwe**
 PhD in Public Health
 University of Rwanda
 Cohort 7



- Stevens Kisaka**
 PhD in Tropical and Infectious
 Diseases
 Makerere University
 Cohort 7



- Oluwaseun Taiwo Esan**
 PhD in Public Health
 Obafemi Awolowo University
 Cohort 8



- Atupele Mulaga**
 PhD in Applied Statistics
 University of Malawi
 Cohort 8

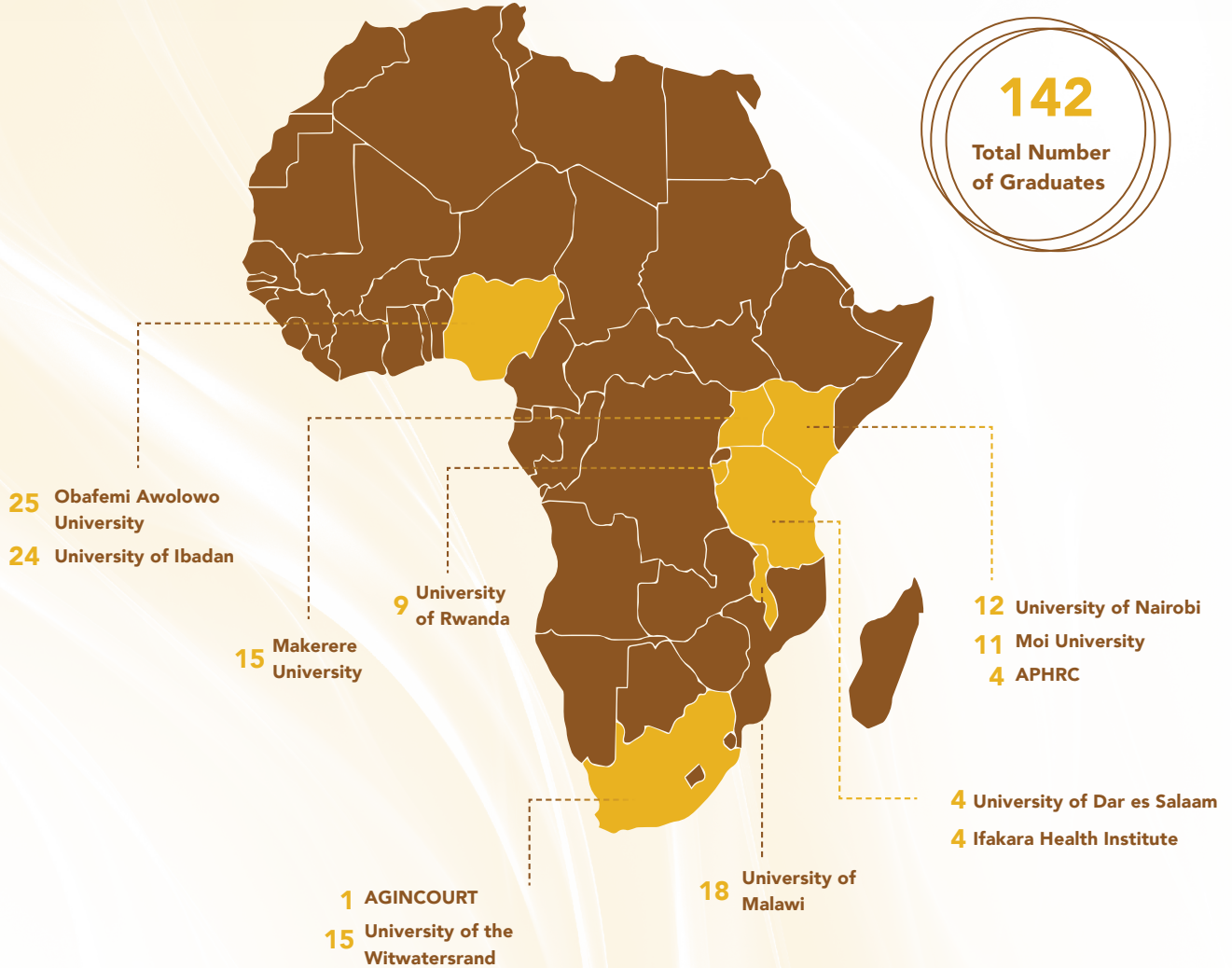


- Felishana Cherop**
 PhD in Strategic Management
 Moi University
 Cohort 7



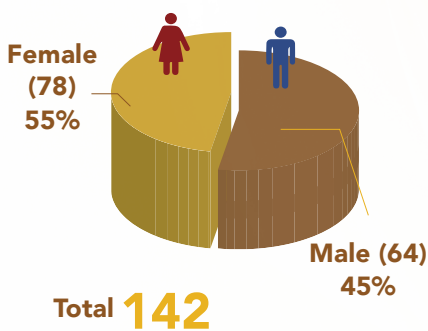
- Omolayo Oluwatope**
 PhD in Demography and Social
 Statistics
 Obafemi Awolowo University
 Cohort 9

Graduates by Institution

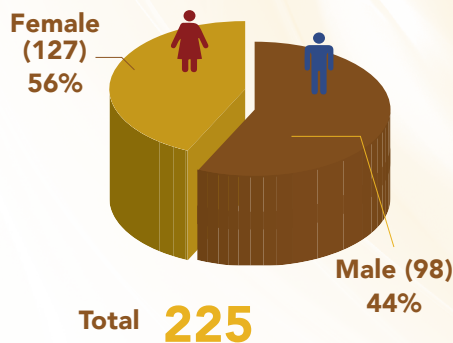


CARTA in Numbers

Graduates by Gender



Fellows by Gender



External Grants Raised by Fellows



Total Peer-Reviewed Publications





Editorial Team

Ann Waithaka (lead) | Florah Karimi | Marta Vicente-Crespo
Topistar Karani | Naomi Njenga

Contact us:

Consortium for Advanced Research Training in Africa
African Population & Health Research Center
APHRC Campus, 2nd Floor, Kirawa Road, off Peponi Road
P.O. Box 10787-00100, Nairobi, Kenya

Telephone: +254 (20) 400 1000, 266 2244, or 266 2255 | Mobile: +254 722 205 933, 733 410 102

E-mail: cartaenquiries@aphrc.org, | Website: www.cart africa.org



© Use of information in this publication, wholly or in part, is permitted provided due credit is given to the CARTA Program